

Initial refractive assessment flowchart

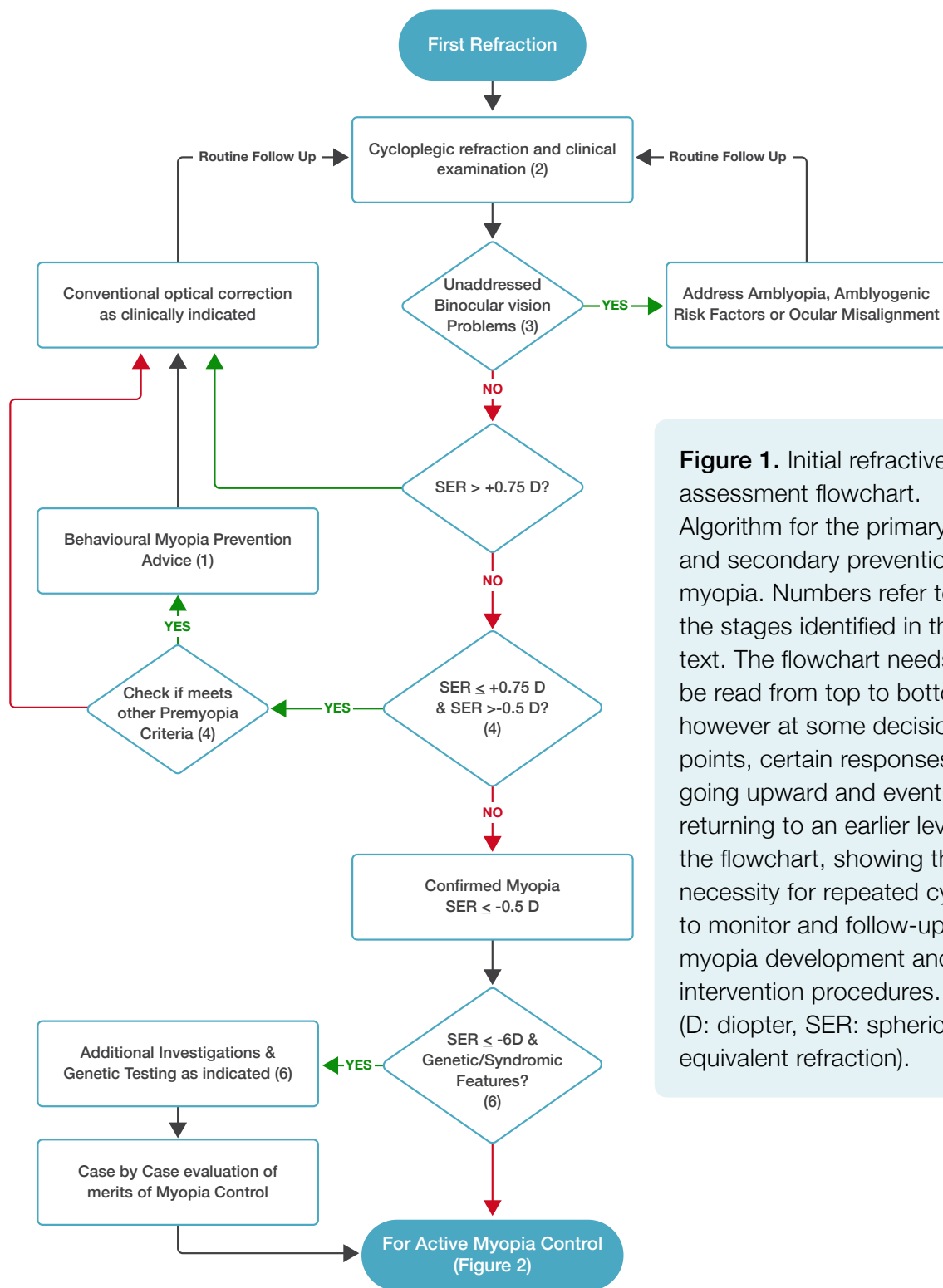


Figure 1. Initial refractive assessment flowchart. Algorithm for the primary and secondary prevention of myopia. Numbers refer to the stages identified in the text. The flowchart needs to be read from top to bottom, however at some decision points, certain responses are going upward and eventually returning to an earlier level of the flowchart, showing the necessity for repeated cycles to monitor and follow-up on myopia development and intervention procedures. (D: diopter, SER: spherical equivalent refraction).

Source: Tapasztó B, Flitcroft DI, Aclimandos WA, Jonas JB, De Faber JHN, Nagy ZZ, Kestelyn PG, Januleviciene I, Grzybowski A, Vidinova CN, Guggenheim JA, Polling JR, Wolffsohn JS, Tideman JW, Allen PM, Baraas RC, Saunders KJ, McCullough SJ, Gray LS, Wahl S, Smirnova IY, Formenti M, Radhakrishnan H, Resnikoff S, Németh J; SOE Myopia Consensus Group. Myopia management algorithm. Annexe to the article titled Update and guidance on management of myopia. European Society of Ophthalmology in cooperation with International Myopia Institute. Eur J Ophthalmol. 2023 Dec 12:11206721231219532. doi: 10.1177/11206721231219532.

Treatment flowchart

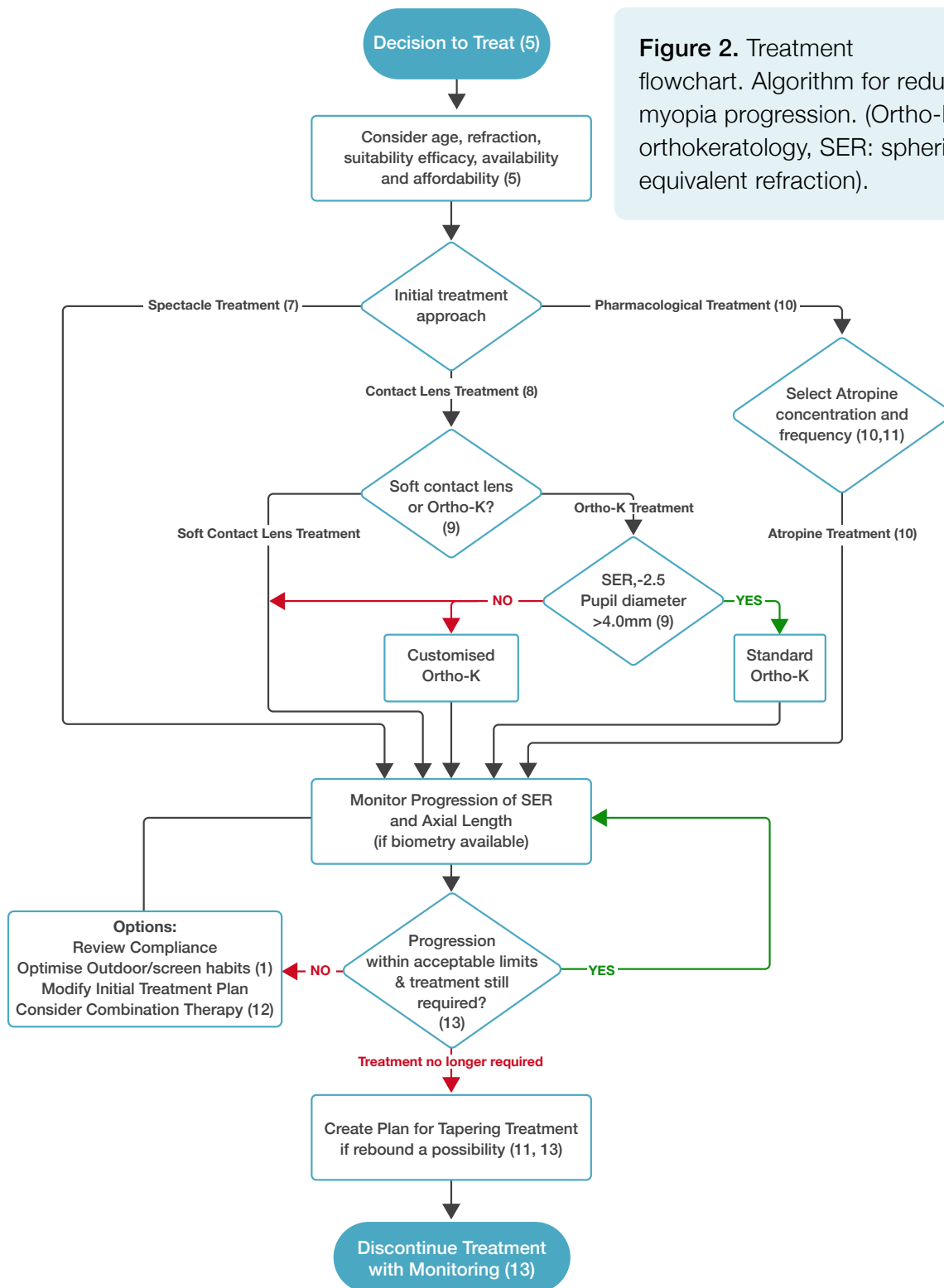


Figure 2. Treatment flowchart. Algorithm for reducing myopia progression. (Ortho-K: orthokeratology, SER: spherical equivalent refraction).

Source: Tapasztó B, Flitcroft DI, Aclimandos WA, Jonas JB, De Faber JHN, Nagy ZZ, Kestelyn PG, Januleviciene I, Grzybowski A, Vidinova CN, Guggenheim JA, Polling JR, Wolffsohn JS, Tideman JW, Allen PM, Baraas RC, Saunders KJ, McCullough SJ, Gray LS, Wahl S, Smirnova IY, Formenti M, Radhakrishnan H, Resnikoff S, Németh J; SOE Myopia Consensus Group. Myopia management algorithm. Annexe to the article titled Update and guidance on management of myopia. European Society of Ophthalmology in cooperation with International Myopia Institute. Eur J Ophthalmol. 2023 Dec 12:11206721231219532. doi: 10.1177/11206721231219532.